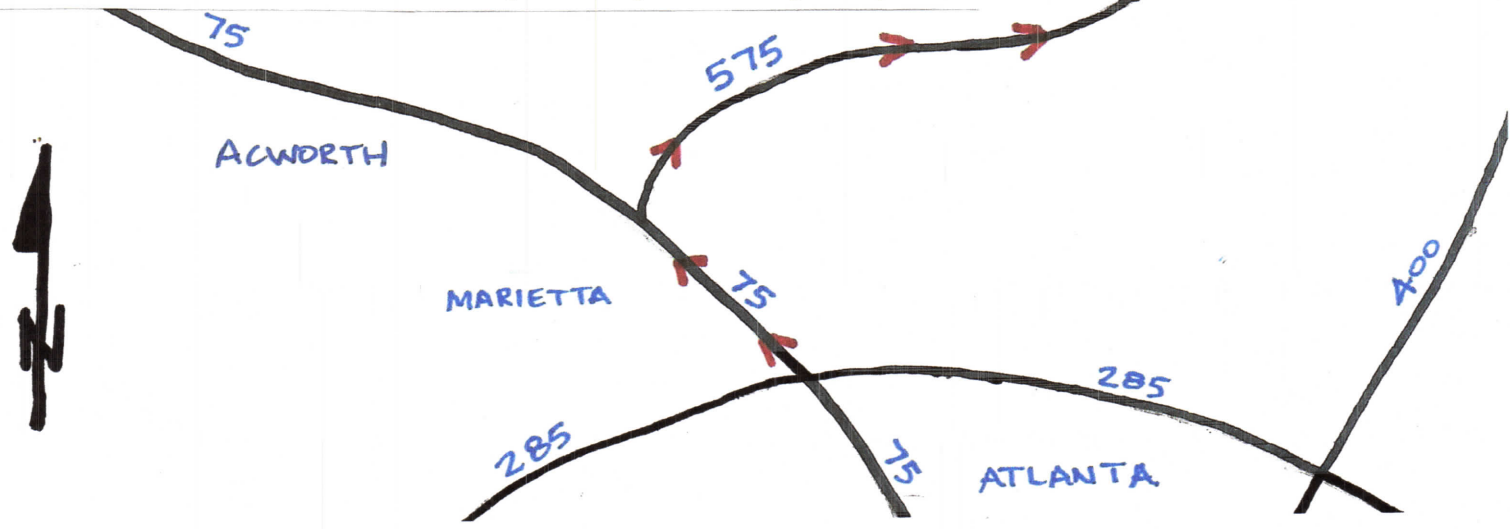


- Leave Atlanta and go North on I 75
- Exit on to I 575 North to East Ellijay (about 50 miles)
- I 575 North will turn in to I 515 (in Ball Ground, Jasper, & Turning Rock)
- In East Ellijay on I 515 take a left turn at red light on to Howard Simmons (Chic Filet & CVS is on your left, Walmart & Long Horn on your right)
- Howard Simmons dead ends in to Old Hwy 5 take a right turn
- Go 1 mile on Hwy 5 and cross the river, make **immediate** left turn on **Legion Road**
- Go 1.2 miles to the Legion Road Gate. Enter Gate on to Newport Road
- Tell them "Lot 1531 Eagle Mountain" - "Riverstone Lodge"
- Go 3.8 miles on Newport till you get to the "Fife Bridge" on the Coosawattee
- Cross Bridge go 3 tenths/mile on Newport to the 2nd Fugue Drive **entrance**
- Go straight in to Fugue Drive 5 tenths of a mile to cabin entrance on left
- Look for **Riverstone Lodge** sign on **telephone pole**.
- **Watch out! Go Slow!** Concrete drive way has steep decline to parking deck.



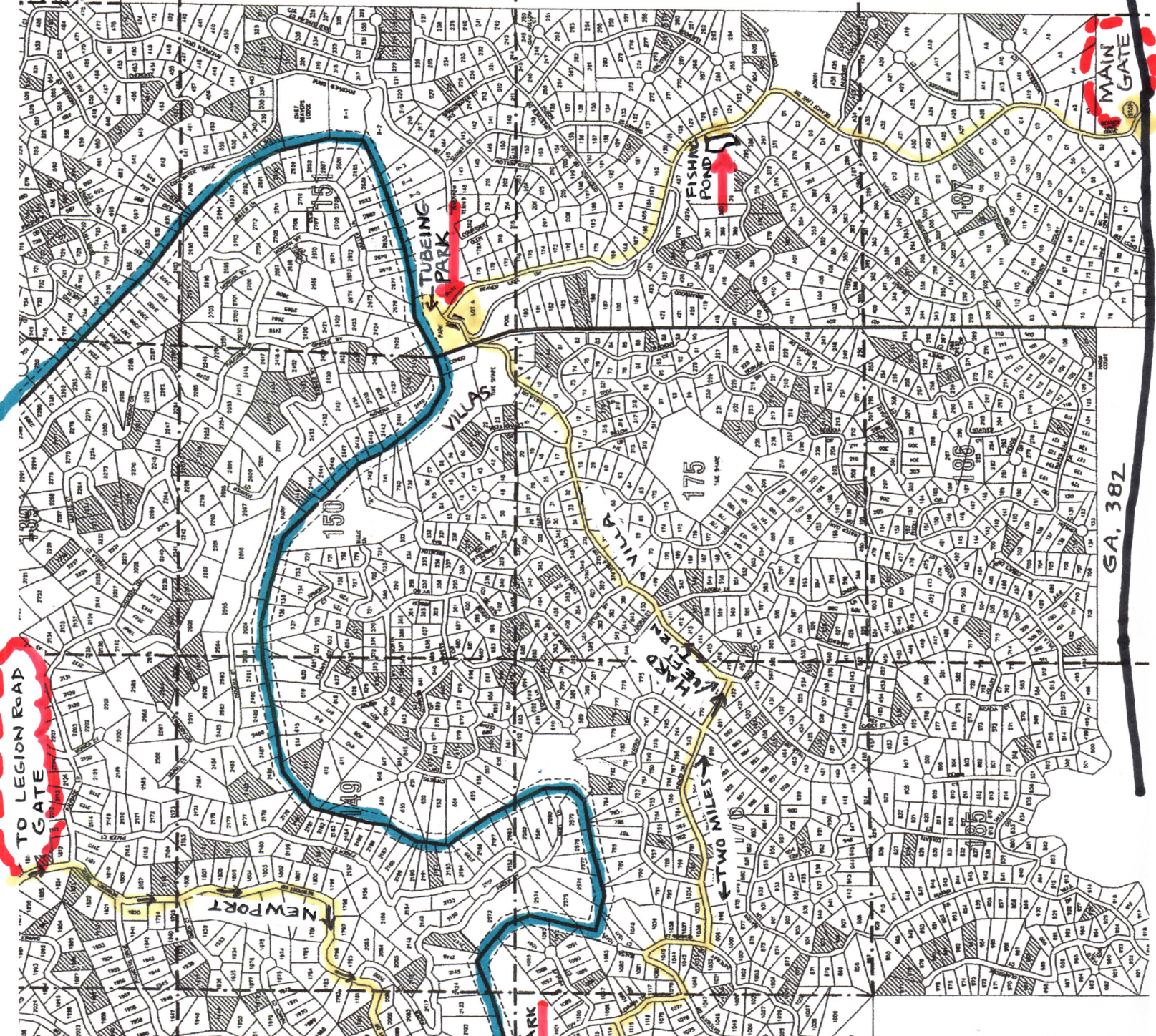
TO ↑
DOWN TOWN
ELLIJAY
TO: LEGION ROAD

OLD HWY 5

152

1886

GA. 382



TO LEGION ROAD
GATE

GA. 382

MOUNTAIN
RIVE IS:
- LODGE"
MOUNTAIN"
DRIVE IS:
- LODGE"